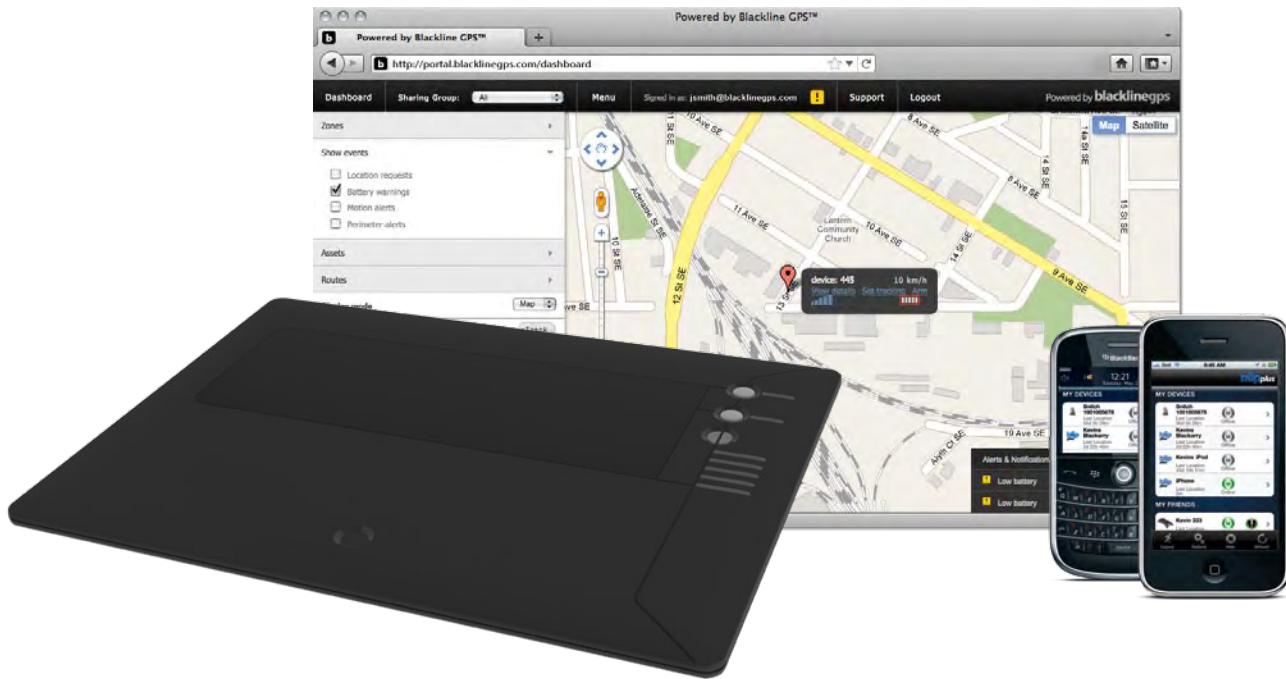


# flattrack™

## Ultra-thin Covert Tracker



### Ultra-thin Covert Tracker

Flat Track™ is the first ultra-thin covert tracker designed specifically to meet the needs of professional surveillance applications, delivering performance, durability and customization.

Featuring a weather-sealed enclosure, Flat Track is prepared for duty out of the box and its thin profile allows flexible covert installation within a target's vehicle. It is easily concealed under carpeting, behind panelling, and in compartments.

The Flat Track removal detection and alerting system is an industry first. This user-enabled feature indicates when Flat Track has been compromised on a target vehicle. A large 5400 mAh internal rechargeable Li-ion battery powers Flat Track. Coupled with user-configured schedules and monitoring options, Flat Track provides the tools to balance system responsiveness with battery life, ranging from two weeks to over two months between charges.

The new Blackline Business Portal is an easy-to-use online interface that hosts Blackline business solutions, including Flat Track. The Business Portal enables mapping of real-time location, real-time continuous tracking, viewing past event data, schedule management and configuration of alert and notification settings.



#### GPS Locating

Unlimited live locating, continuous tracking, locate-on-motion



#### Removal Detection & Alerting

User alert sent when removed from the vehicle



#### Mobile Messaging

Alerts and notifications via email & SMS



#### Long Battery Life

Rechargeable battery provides up to two months operation



#### Thin Profile

Unique form factor enables placement in challenging installations



#### Sealed Design

Robust protection against water and dust

## Specifications

### Size & Weight

Size: 182 mm W x 8 mm H x 240 mm L (7.2" x 0.3" x 9.5")  
Weight: 181 g (6.4 oz)

### Buttons & Indicator Lights

Button 1: Power on/off (with press of Button 2), indicator light wake-up  
Button 2: Battery level indicator wake-up  
Indicator light: Power, wireless connection status and battery level

### Wireless Communication

Radio: Quad-band GSM/GPRS (800, 900, 1800, 1900 MHz)  
Antenna: Internal quad-band  
Bidirectional communication  
Firmware upgrade over-the-air (FOTA)

### Assisted GPS

Radio: 20-channel high sensitivity, mobile assisted  
Antenna: Internal Ultimate Sense<sup>®</sup> 2 GPS antenna extends operation in weak GPS signal conditions  
Accuracy: ~5 m (16 ft) outdoors, ~50 m (165 ft) indoors  
Real-time location turnaround time: ~20 seconds

### Mobile Messaging Methods

Email, text message (SMS)

### Alert Messages

Device removal detection, vehicle movement detection

### Notification Messages

Low internal battery  
On-network (power-on and return-to-coverage)  
Off-network (power-off and out-of-coverage time-out)

### Scheduler

Features include: Periodic automatic location, location-on-motion  
Scheduler intervals: Service plan dependant

### Power & Battery

Rechargeable Li-ion battery: 5400 mAh Li-ion

### Environmental

Storage temperature: -30 to 75°C (-22 to 167°F)  
Operating temperature: -20 to 55°C (-4 to 131°F)  
Ingress protection: IP65, 100% condensing humidity

### Approvals

FCC Part 15 Subpart B, FCC ID: QIPBG53, Industry Canada ICES-003, PTCRB type approval, RoHS

### Device Requirements

Blackline GPS activated service plan  
GSM/GPRS Wireless communication coverage  
GPS Signal coverage required for GPS locating

### Warranty

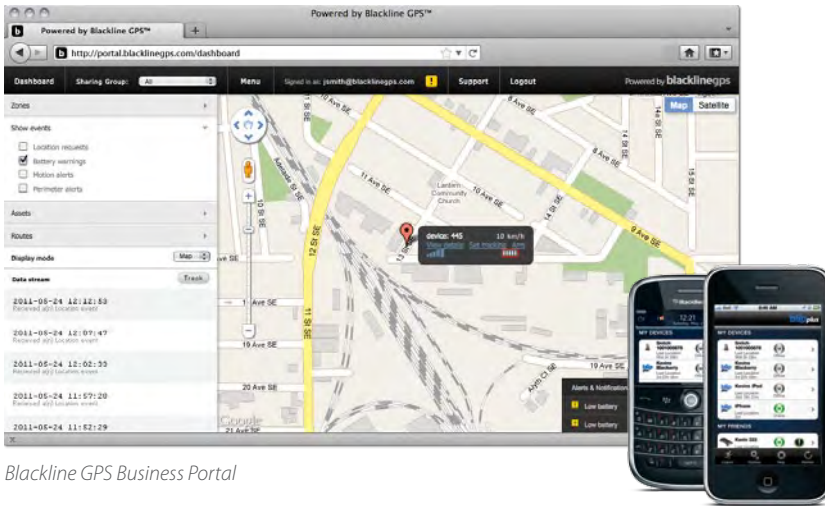
1-Year limited factory warranty

### Activated Service Plans and Wireless Coverage

Wireless coverage: Nearly 150 countries  
Service plan options: Contact Blackline GPS

### Blackline Business Portal Web Application

Features Include: Event history, device location mapping, device management, alert & notification settings, and more



Blackline GPS Business Portal

Blip Plus app on iPhone and Blackberry

## Benefits

- Self-contained tracking device designed to industrial performance standards.
- Increases awareness of a surveillance target's activity.
- Removal detection & alerting indicates when Flat Track has been compromised.
- Quickly map a target vehicle location in the new Blackline Business Portal.
- Locate-on-motion automatically records target activity.
- Large capacity internal 5400 mAh battery extends surveillance life.
- Customizable scheduling provides user-controlled power management.
- Affordable surveillance
- Low training barrier

## Advantages

- Ultimate Sense<sup>®</sup> 2 high sensitivity GPS antenna makes the most of weak signal coverage.
- Easy-to-use web-based Blackline Business Portal for efficient mapping and administration.
- Quickly map previous routes with data from origin to destination.
- Firmware upgradable over-the-air accommodates future enhancements.
- Web-hosted user account. No software to install.